



revos

SECURELY SCREWED

Heavy-duty cable gland solutions.

Plastic cable gland, metric

Cable gland

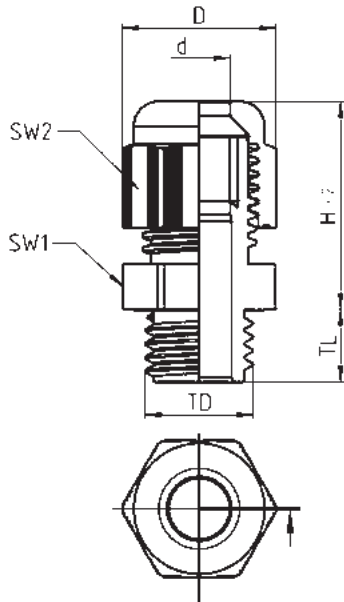


TD Thread	D mm	d mm	H mm	TL mm	SW1 mm	SW2 mm	Part No.	P.U.	VDE	UL/ UR	CSA
M12x1.5	16.9	3-6.5	23	8	15	15	Z5.503.0053.0	100	✓	UR	✓
M16x1.5	25	5-10	30	10	22	22	Z5.503.0253.0	50	✓	UR	✓
M20x1.5	27	6-12	30	10	24	24	Z5.503.0453.0	50	✓	UL	✓
M20x1.5	31	10-14	33.5	10	27	27	Z5.503.0553.0	50	✓	UL	✓
M25x1.5	38	13-18	38	10	33	33	Z5.503.0753.0	25	✓	UL	✓
M32x1.5	47.3	18-25	42	15	42	42	Z5.503.0853.0	20	✓	UL	✓
M16x1.5	21.9	2-6	26,5	8	19	19	Z5.503.0153.0	50		UR	✓
M16x1.5	21.9	4-8	26,5	8	19	19	Z5.503.0353.0	50	✓	UR	✓
M25x1.5	32.5	9-13	36	15	29	29	Z5.503.0653.0	50		UL	✓

Technical data

Material	Polyamide
Color	RAL 7035
Seal	Chloroprene
Temperature range	-20 – +100 °C
Degree of protection	IP 66 / IP 68 (5 bar, 30 min.)
Flammability	UL 94 V-2
UV	SERCOV AM RES 107572 acc. to UL51 4B §8.26.7

Dimensions



Key	
D	Outer diameter
d	Cable diameter
H	Height
TL	Thread length
SW1	SW Body
SW2	SW Cap

Plastic cable gland, PG

Cable gland

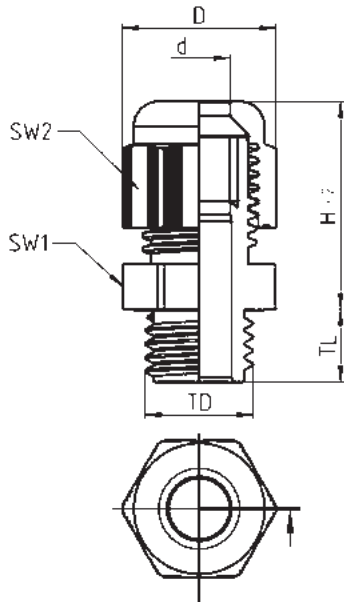


TD Thread	D mm	d mm	H mm	TL mm	SW1 mm	SW2 mm	Part No.	P.U.	UL	UR	CSA
PG7	16.9	3-6.5	22.5	8	15	15	Z5.504.0053.0	100		✓	✓
PG9	21.9	4-8	26.5	8	19	19	Z5.504.0153.0	50		✓	✓
PG11	25	5-10	29	8	22	22	Z5.504.0253.0	50		✓	✓
PG13.5	27	6-12	30	10	24	24	Z5.504.0353.0	50	✓		✓
PG16	30.9	10-14	33	10	27	27	Z5.504.0453.0	50	✓		✓
PG21	38	13-18	38	11	33	33	Z5.504.0553.0	25	✓		✓

Technical data

Material	Polyamide
Color	RAL 7035
Seal	Chloroprene
Temperature range	-20 – +100 °C
Degree of protection	IP 66 / IP 68 (5 bar, 30 min.)
Flammability	UL 94 V-2
UV	SERCOV AM RES 107572 acc. to UL51 4B §8.26.7

Dimensions



Key	
D	Outer diameter
d	Cable diameter
H	Height
TL	Thread length
SW1	SW Body
SW2	SW Cap

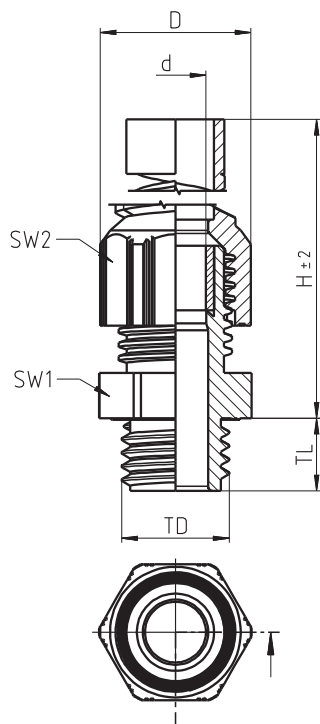
Plastic cable gland, metric

Cable gland



TD Thread	D mm	d mm	H mm	TL mm	SW1 mm	SW2 mm	Part No.	P.U.	UL	CSA
M20x1.5	27	5-9	94	10	24	24	Z5.507.0053.3	50	✓	✓
M25x1.5	38	9-16	117.5	10	33	33	Z5.507.0953.3	25	✓	✓
Technical data										
Material					Polyamide					
Color					RAL 7001					
Seal					Chloroprene					
Temperature range					-20 – +100 °C					
Degree of protection					IP 66 / IP 68 (5 bar, 30 min.)					
Flammability					UL 94 V-2					


Dimensions




Key	
D	Outer diameter
d	Cable diameter
H	Height
TL	Thread length
SW1	SW Body
SW2	SW Cap

Plastic cable gland, snap-In

Cable gland



Removal tool



HD mm	SD mm	SL mm	D mm	d mm	H mm	SW1 mm	SW2 mm	Part No.	P.U.	UR	CSA
16.2-16.4	15.9	9	26.5	5-10	42,5	22	22	Z5.504.4053.3	100	✓	✓
20.2-20.4	19.9	9	30.3	6-12	41,5	24	24	Z5.504.4153.3	50	✓	✓
20.2-20.4	19.9	9	30.3	6-12	41,5	24	24	Z5.504.4153.1	50		

Technical data

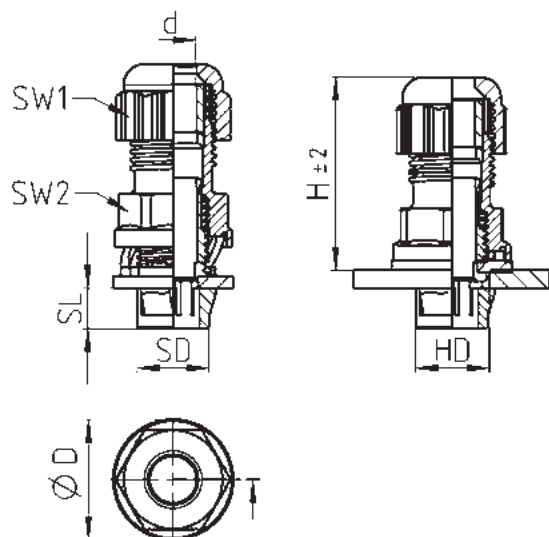
Material	PA
Seal	Chloroprene
Color	RAL ... (.3 = Silver Gray 7001, .1 = Black 9005)
Removal tool color	RAL 7035
Temperature range	-20 – +100 °C
Degree of protection	IP 66 / IP 68 (5 bar, 30 min.)
Flammability	UL 94 V-2
for wall thickness	0.5 – 4.0 mm

Removal tool

Dimensions	H mm	D mm	Part No.	P.U.		
16	13	16	05.504.5053.0	1		
20	13	20	05.504.5153.0	1		

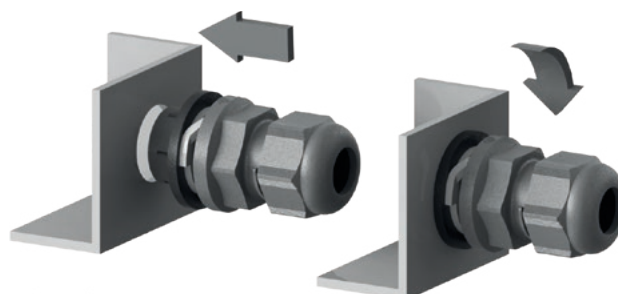
Dimensions

Cable gland

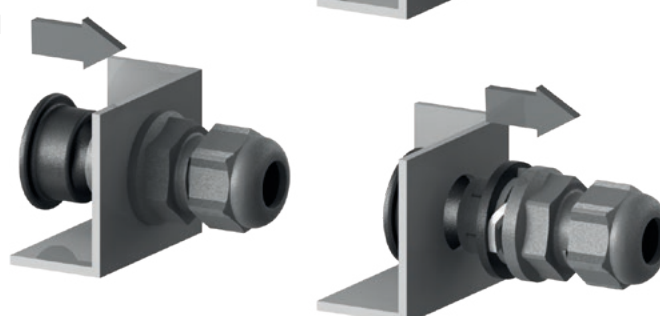


Key	
HD	Bore
SD	Snap diameter
SL	Snap length
D	Outer diameter
d	Cable diameter
H	Height
SW1	SW Body
SW2	SW Cap

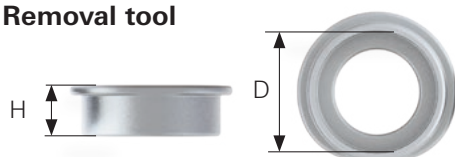
Installation



Removal



Removal tool



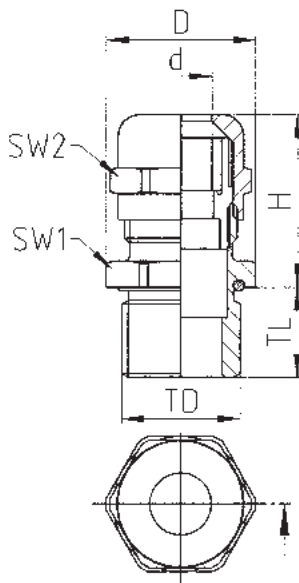
Brass cable gland, nickel-plated, metric

Cable gland



TD Thread	D mm	d mm	H mm	TL mm	SW1 mm	SW2 mm	Part No.	P.U.	VDE	UL/ UR	cUL/ cUR
M16x1.5	20	4-8	23	7	18	17	Z5.503.2121.0	50	✓	UR	cUR
M25x1.5	29.8	10-14	28	8	27	24	Z5.503.2721.0	25	✓	UL	cUL
M25x1.5	33	13-18	32.5	8	30	30	Z5.503.2921.0	25	✓	UL	cUL
M32x1.5	37.5	13-18	33	9	34	30	Z5.503.3121.0	20	✓	UL	cUL
M63x1.5	83	37-53	51	10	75	75	Z5.503.3921.0	5	✓	UL	cUL
M16x1.5	20	4-8	23	12	18	17	Z5.503.2221.0	50		UR	cUR
M20x1.5	24.5	6-12	24.5	12	22	22	Z5.503.2421.0	50	✓	UL	cUL
M25x1.5	29.8	10-14	28	12	27	24	Z5.503.2821.0	25	✓	UL	cUL
M32x1.5	37.5	13-18	33	15	34	30	Z5.503.3221.0	20	✓	UL	cUL
M40x1.5	48.5	18-25	38.5	15	43	40	Z5.503.3521.0	10	✓	UL	cUL
M12x1.5	15.5	3-6,5	22	12	14	14	Z5.503.4221.0	50	✓	UR	cUR
M16x1.5	22	5-10	28.5	12	20	20	Z5.503.4421.0	50	✓	UR	cUR
M20x1.5	24.5	6-12	26	12	22	22	Z5.503.4621.0	50	✓	UL	cUL
M25x1.5	30	11-17	30.5	12	27	27	Z5.503.4821.0	25	✓	UL	cUL
M32x1.5	37	15-21	36.2	15	34	34	Z5.503.5021.0	20	✓	UL	cUL
M40x1.5	48.4	19-28	43.5	15	43	43	Z5.503.5221.0	10	✓	UL	cUL
M50x1.5	64	27-38	52	15	58	58	Z5.503.5421.0	5	✓	UL	cUL
Technical data											
Material					Brass, nickel-plated						
Clamping insert					Polyamide						
Seal					Chloroprene						
O-ring					NBR						
Temperature range					-20 – +100 °C						
Degree of protection					IP 66 / IP 68 (5 bar, 30 min.)						
Flammability					UL 94 V-2						

Dimensions



Key	
D	Outer diameter
d	Cable diameter
H	Height
TL	Thread length
SW1	SW Body
SW2	SW Cap

Brass cable gland, nickel-plated, PG

Cable gland

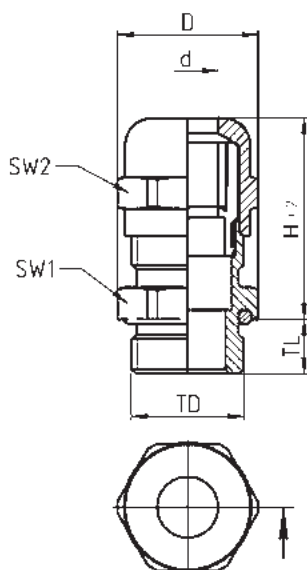


TD Thread	D mm	d mm	H mm	TL mm	SW1 mm	SW2 mm	Part No.	P.U.	UL	UR	cUL/ cUR
PG7	15.5	3-6.5	22	6	14	14	Z5.504.2021.0	50		✓	cUR
PG9	18.9	4-8	23.5	6	17	17	Z5.504.2221.0	50		✓	cUR
PG11	22	5-10	26	6	20	20	Z5.504.2421.0	50		✓	cUR
PG13.5	24.5	6-12	24.5	6.5	22	22	Z5.504.2621.0	50	✓		cUL
PG16	26.5	10-14	28	6.5	24	24	Z5.504.2821.0	25	✓		cUL
PG21	33	13-18	32.5	7.2	30	30	Z5.504.3021.0	25	✓		cUL
PG29	44.5	18-25	38.5	8	40	40	Z5.504.3221.0	10	✓		cUL
PG36	55.5	22-32	48	9	50	50	Z5.504.3421.0	5	✓		cUL
PG7	15.5	3-6.5	22	10	14	14	Z5.504.2121.0	50		✓	cUR
PG9	18.9	4-8	23.5	10	17	17	Z5.504.2321.0	50		✓	cUR
PG11	22	5-10	26	10	20	20	Z5.504.2521.0	50		✓	cUR
PG13.5	24.5	6-12	24.5	10	22	22	Z5.504.2721.0	50	✓		cUL
PG16	26.5	10-14	28	10	24	24	Z5.504.2921.0	25	✓		cUL
PG21	33	13-18	32.5	12	30	30	Z5.504.3121.0	25	✓		cUL
PG29	44.5	18-25	38.5	12	40	40	Z5.504.3321.0	10	✓		cUL
PG36	55.5	22-32	48	14	50	50	Z5.504.3521.0	5	✓		cUL

Technical data

Material	Brass, nickel-plated
Clamping insert	Polyamide
Seal	Chloroprene
O-ring	NBR
Temperature range	-20 – +100 °C
Degree of protection	IP 66 / IP 68 (5 bar, 30 min.)
Flammability	UL 94 V-2


Dimensions



Key	
D	Outer diameter
d	Cable diameter
H	Height
TL	Thread length
SW1	SW Body
SW2	SW Cap

Stainless steel cable gland, metric

Cable gland

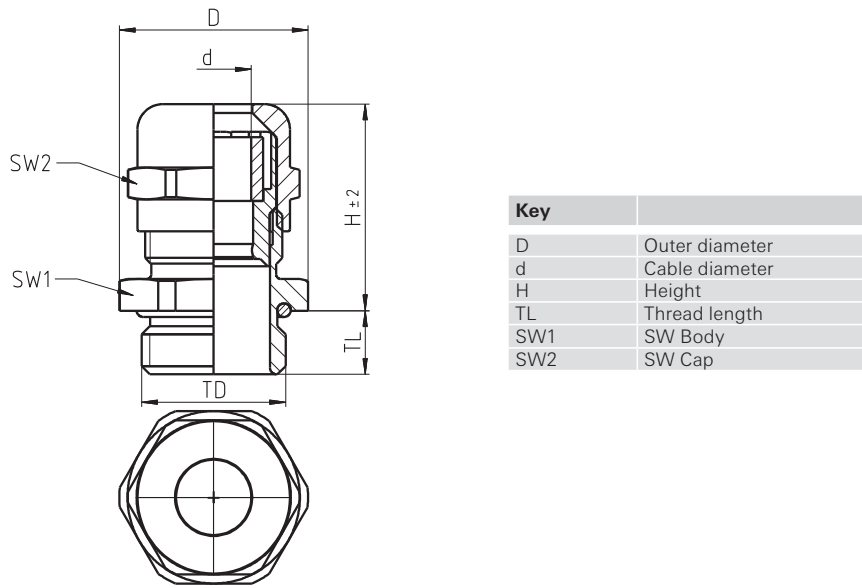


TD Thread	D mm	d mm	H mm	TL mm	SW1 mm	SW2 mm	Part No.	P.U.	VDE	UL/ UR	cUL/ cUR
M16x1.5	20.8	4-8	23	7	19	17	Z5.503.6119.0	10	✓	UR	cUR
M20x1.5	24.5	6-12	26	8	22	22	Z5.503.6219.0	10			
M25x1.5	29.6	10-14	27.5	8	27	24	Z5.503.6319.0	10	✓	UL	cUL
M32x1.5	39	13-18	32.5	9	36	30	Z5.503.6419.0	10	✓	UL	cUL
M40x1.5	51.4	18-25	40.6	9	46	41	Z5.503.6519.0	10	✓	UL	cUL

Technical data

Material	Stainless steel 1.4305 (AISI 303)
Clamping insert	Polyamide
Seal	Chloroprene
O-ring	NBR
Temperature range	-20 – +100 °C
Degree of protection	IP 66 / IP 68 (5 bar, 30 min.)
Flammability	UL 94 V-2

Dimensions



Stainless steel cable gland, PG

Cable gland

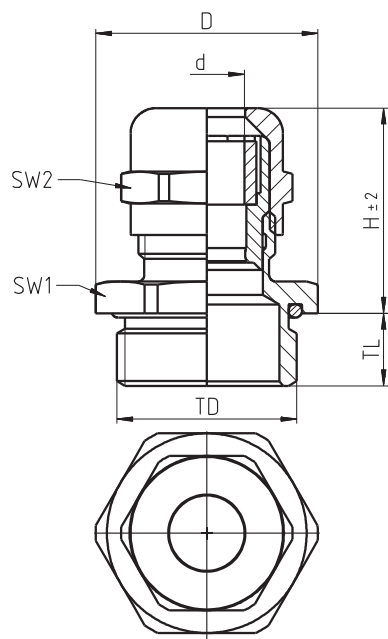


TD Thread	D mm	d mm	H mm	TL mm	SW1 mm	SW2 mm	Part No.	P.U.	UL	UR	cUR
PG7	15.5	3-6.5	22	6	14	14	Z5.504.6019.0	10		✓	✓
PG9	21	4-8	22.7	6	19	17	Z5.504.6119.0	10		✓	✓
PG11	24	5-10	25.5	6	22	22	Z5.504.6219.0	10		✓	✓
PG13.5	24.5	6-12	24	6.5	22	22	Z5.504.6319.0	10	✓		✓
PG16	26.5	10-14	28	6.5	24	24	Z5.504.6419.0	10	✓		✓
PG21	33	13-18	32	7.2	30	30	Z5.504.6519.0	10	✓		✓
PG29	45.5	18-25	37	8	41	41	Z5.504.6619.0	10	✓		✓
PG36	55.5	22-32	47.5	9	50	50	Z5.504.6719.0	10	✓		✓

Technical data

Material	Stainless steel 1.4305 (AISI 303)
Clamping insert	Polyamide
Seal	Chloroprene
O-ring	NBR
Temperature range	-20 – +100 °C
Degree of protection	IP 66 / IP 68 (5 bar, 30 min.)
Flammability	UL 94 V-2

Dimensions



Key	
D	Outer diameter
d	Cable diameter
H	Height
TL	Thread length
SW1	SW Body
SW2	SW Cap

Brass cable gland, nickel-plated, snap-In

Cable gland



Removal tool



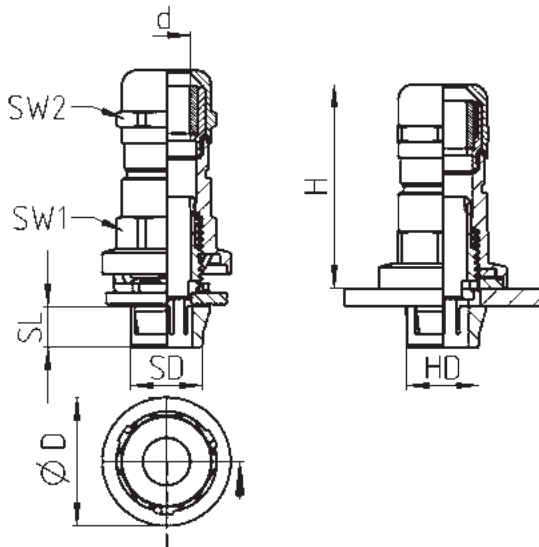
HD mm	SD mm	SL mm	D mm	d mm	H mm	SW1 mm	SW2 mm	Part No.	P.U.	
16.2-16.4	16	9	28.3	5-10	45	20	20	Z5.504.5021.0	20	
20.2-20.4	20	9	32.3	6-12	44	22	22	Z5.504.5121.0	20	

Technical data	
Material	Brass, nickel-plated
Removal tool material	Plastic
Seal	Chloroprene
Removal tool color	RAL 7035
Temperature range	-20 – +100 °C
Degree of protection	IP 66 / IP 68 (5 bar, 30 min.)
Flammability	UL 94 V-2
for wall thickness	0.5 – 4.0 mm

Removal tool				
Dimensions	H mm	D mm	Part No.	P.U.
16	13	16	05.504.5053.0	1
20	13	20	05.504.5153.0	1

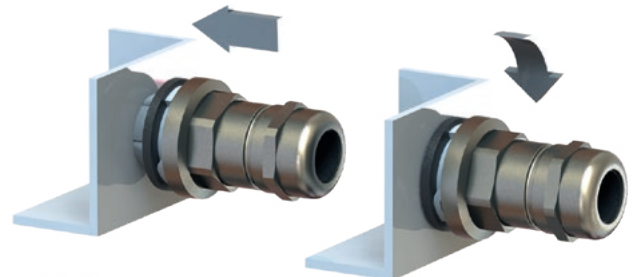
Dimensions

Cable gland

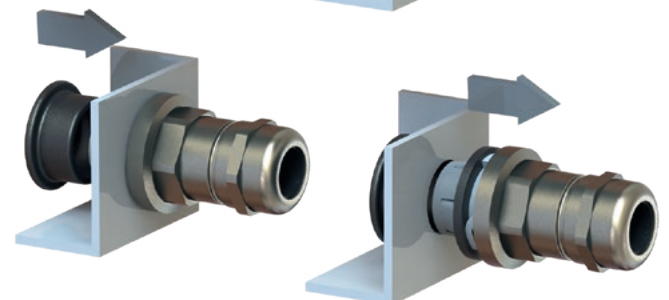


Key	
HD	Bore
SD	Snap diameter
SL	Snap length
D	Outer diameter
d	Cable diameter
H	Height
SW1	SW Body
SW2	SW Cap

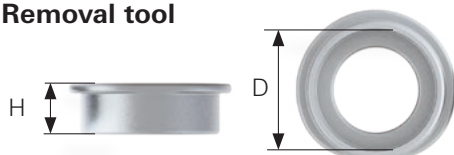
Installation



Removal



Removal tool



Brass cable glands, nickel-plated, metric

Cable gland, IP54, with strain relief



Name	Type	Part No.	P.U.
Cable gland metal			
	Cable Ø [mm] L [mm] I [mm] SW [mm]		
M20x1.5	6.5 – 11.5 25 6 24	Z5.507.5821.0	1
M25x1.5	9 – 20 29 7 34	Z5.507.6021.0	1
M32x1.5	17 – 28 32 8 42	Z5.507.6221.0	1
M40x1.5	23 – 35 40 8 52	Z5.507.6421.0	1
Technical data			
Material	Brass, nickel-plated		
Color	-		
Degree of protection	IP54		
Flammability	-		

Bushing, IP54



Name	Type	Part No.	P.U.
Bushing metal			
	Cable Ø [mm] L [mm] I [mm] SW [mm]		
M16x1.5	3 – 9 15 5 16	Z5.507.2121.0	1
M20x1.5	4 – 13 17.5 6 20	Z5.507.2221.0	1
M25x1.5	8.5 – 17.5 20 7 25	Z5.507.2321.0	1
M32x1.5	16 – 25 23 8 32	Z5.507.2421.0	1
Technical data			
Material	Brass, nickel-plated		
Color	-		
Degree of protection	IP54		
Flammability	-		

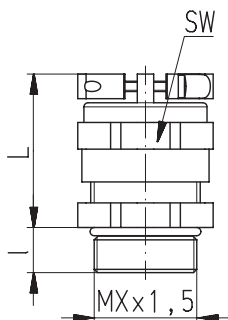
Strain relief, IP54



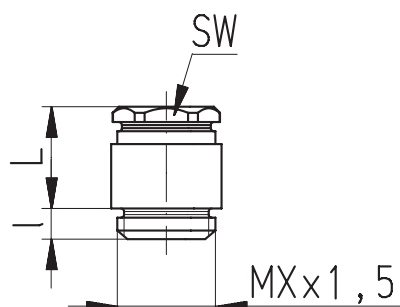
Name	Type	Part No.	P.U.
Cable gland metal			
	Cable Ø [mm] L [mm] I [mm] SW [mm]		
M16x1.5	4 – 9 29 5 18	Z5.507.9521.0	10
M20x1.5	6.5 – 13.5 33 6 22	Z5.507.9621.0	10
M25x1.5	9 – 20 38 7 30	Z5.507.9721.0	10
M32x1.5	17 – 26 43 8 36	Z5.507.9821.0	10
Technical data			
Material	Brass, nickel-plated		
Color	-		
Degree of protection	IP54		
Flammability	-		

Dimensions

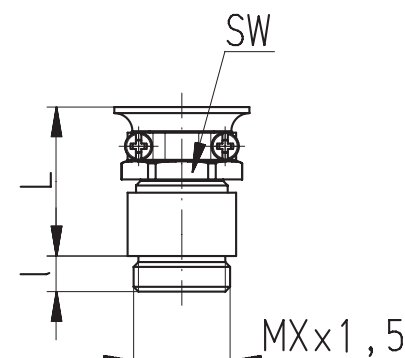
Cable gland, IP54, with strain relief, metal



Cable gland, IP54, metal



Strain relief, IP54, metal



EMC brass cable gland, nickel-plated, metric

Cable gland

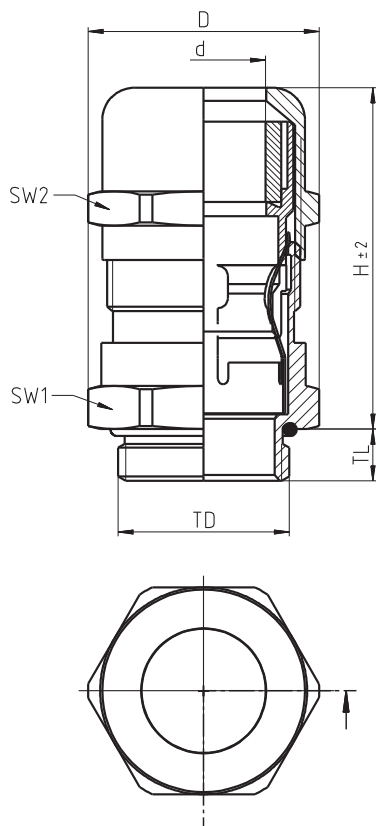


TD Thread	D mm	d mm	ShieldØ mm	H mm	TL mm	SW1 mm	SW2 mm	Part No.	P.U.	VDE	UL	cUL
M20x1.5	26.8	7.5-14	5.5-11.5	39.6	8	24	24	Z5.503.7221.0	10	✓	✓	✓
M25x1.5	33	10-18	7-14	43	8	30	30	Z5.503.7321.0	10	✓	✓	✓
M32x1.5	43.5	16-25	12-20	53	9	40	40	Z5.503.7421.0	10	✓	✓	✓
M40x1.5	55.5	22-32	18-27	60.5	9	50	50	Z5.503.7521.0	10	✓	✓	✓

Technical data

Material	Brass, nickel-plated
Clamping insert	Polyamide
Seal	Chloroprene
O-ring	NBR
Temperature range	-20 – +100 °C
Degree of protection	IP 66 / IP 68 (5 bar, 30 min.)
Flammability	UL 94 V-2

Dimensions



Key	
D	Outer diameter
d	Cable diameter
TD	Thread diameter
H	Height max.
TL	Thread length
SW1	SW Body
SW2	SW Cap

EMC brass cable gland, nickel-plated, PG

Cable gland

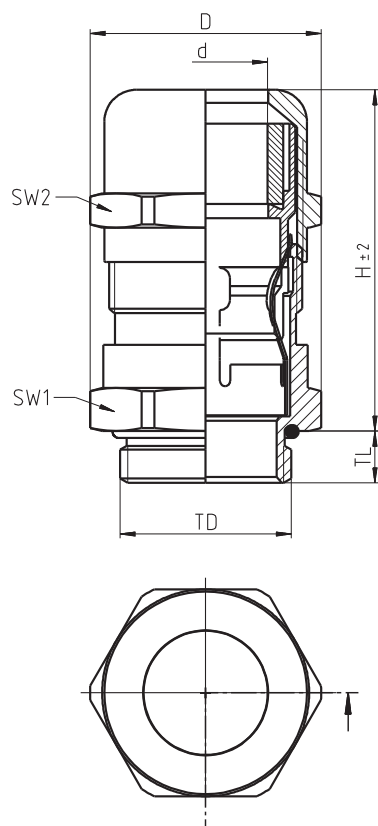


TD Thread	D mm	d mm	ShieldØ mm	H mm	TL mm	SW1 mm	SW2 mm	Part No.	P.U.		
PG16	27.5	7.5-14	5.5-11.5	39.5	6.5	24	25	Z5.504.7421.0	10		
PG21	35.5	10-18	7-14	42.5	7	32	30	Z5.504.7521.0	10		
PG29	43.5	16-25	12-20	52.5	9	40	40	Z5.504.7621.0	10		

Technical data

Material	Brass, nickel-plated
Clamping insert	Polyamide
Seal	Chloroprene
O-ring	NBR
Temperature range	-20 – +100 °C
Degree of protection	IP 66 / IP 68 (5 bar, 30 min.)
Flammability	UL 94 V-2

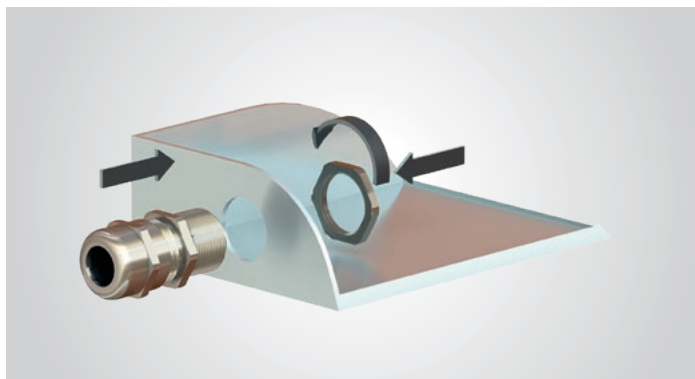
Dimensions



Key	
D	Outer diameter
d	Cable diameter
TD	Thread diameter
H	Height max.
TL	Thread length
SW1	SW Body
SW2	SW Cap

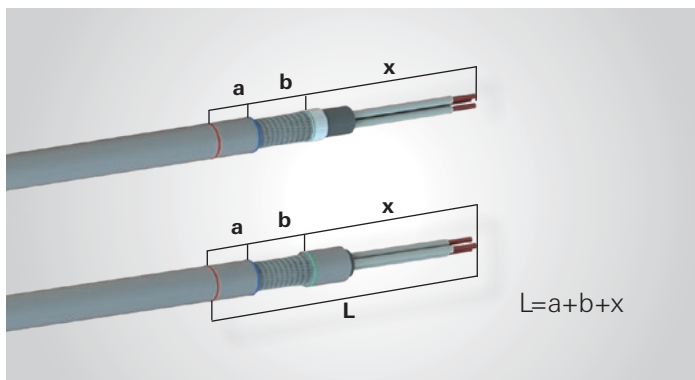
Assembly instructions for EMC cable gland

- ① Fasten EMC cable gland on the housing to the specified torque.



- ② Cable preparation

- a) Mark dimension "L" on the cable sheath.
- b) Carefully remove outer cable sheath "b+x" using a suitable cable stripper. Do not damage braid.
- c) Protect braid with insulating tape or a piece of cable sheath at the end.



For dimension a and b see table below.

Key:

- a = outer screen length (for dimension a see table)
 b = stripped shield length (for dimension b see table)
 x = Length in the housing (dimension x is dependent on the housing used)

Metric cable glands

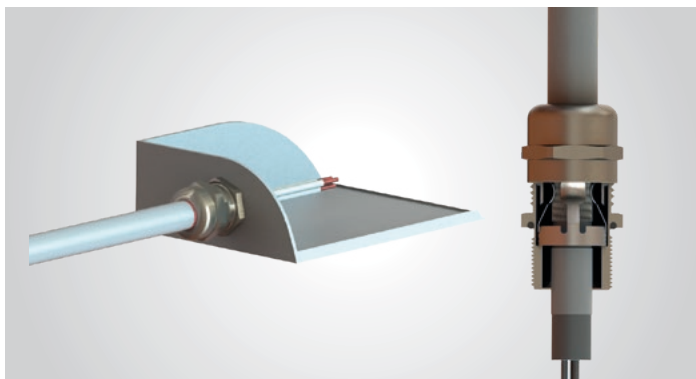
Item number	Thread size	Outer sheath length marking a (mm)	Stripped shield length b (mm)	Tightening torque cable screw gland thread (Nm)	Tightening torque cable screw cap thread (Nm)
Z5.503.7221.0	M20x1.5	15	19	10 ±1	10 ±1
Z5.503.7321.0	M25x1.5	19	20	15 ±1	15 ±1
Z5.503.7421.0	M32x1.5	21	26	22 ±1	22 ±1
Z5.503.7521.0	M40x1.5	26	28	42 ±1	42 ±1

PG cable glands

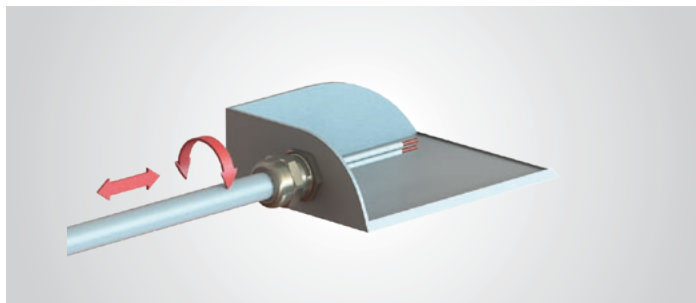
Item number	Thread size	Outer sheath length marking a (mm)	Stripped shield length b (mm)	Tightening torque cable screw gland thread (Nm)	Tightening torque cable screw cap thread (Nm)
Z5.504.7421.0	PG 16	15	19	10 ±1	10 ±1
Z5.504.7521.0	PG 21	19	20	15 ±1	15 ±1
Z5.504.7621.0	PG 29	21	26	22 ±1	22 ±1

Assembly instructions for EMC cable gland

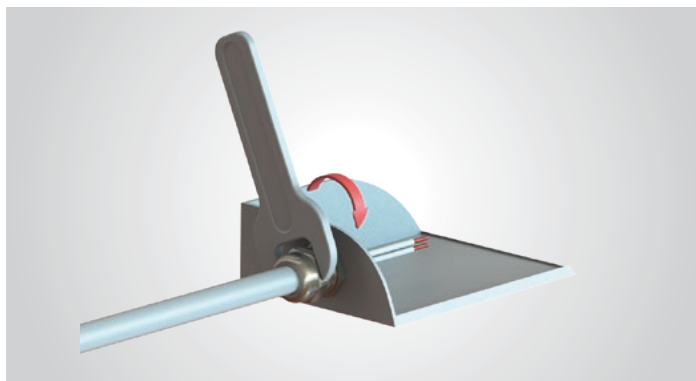
- ③ Insert cable into the gland until the "L" mark is at the height of the cap nut. The cable shield must now be connected to the EMC spring of the screw gland.



- ④ The cable can still be positioned as long as the cap nut is not tightened to the specified torque.

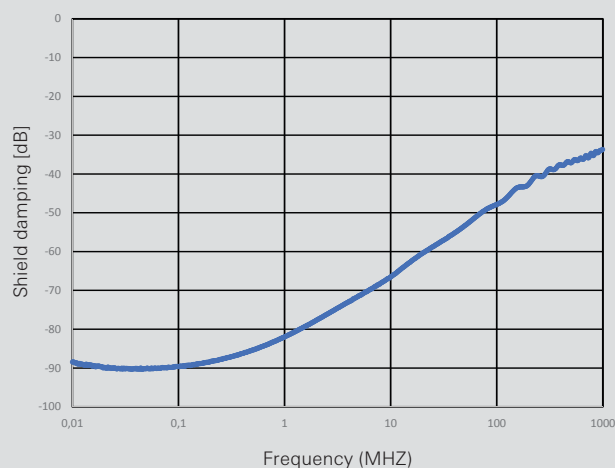


- ⑤ Tighten the cap nut to the specified torque (see table).



- ⑥ EMC test results:
Shield damping

Reference:
75.503.7221.0 / M20x1.5



1) The measurements have been taken by the VDE Test and Certification Institute according to the triaxial method.

Accessories Flange nut, plastic in metric

Flange nut

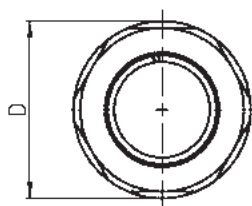


Thread	D mm	H mm	SW1 mm	Part No.	P.U.			
M12x1.5	19.5	5	18	05.506.5053.0	100			
M16x1.5	24.2	5	22	05.506.5153.0	50			
M20x1.5	28.6	6	26	05.506.5253.0	50			
M25x1.5	35	6	32	05.506.5353.0	50			
M32x1.5	46.1	7	41	05.506.5453.0	25			
M40x1.5	55.3	7	50	05.506.5553.0	10			
M50x1.5	66.1	8	60	05.506.5653.0	10			
M63x1.5	82.5	8	75	05.506.5753.0	10			

Technical data

Material	Polyamide
Color	RAL 7035
Temperature range	-20 – +100 °C
Flammability	UL 94 HB

Dimensions



Key	
D	Outer diameter
H	Height
SW1	Wrench size

Accessories Screw plug

Screw plug, metric, plastic



Thread	TD mm	TL mm	H mm	D mm	Part No.	P.U.			
M16x1.5	16	7	4,5	20	05.506.7153.0	100			
M20x1.5	20	7	5,5	24	05.506.7253.0	50			
M25x1.5	25	10	5	30	05.506.7353.0	25			

Technical data

Material	Polyamide
Color	RAL 7035
Temperature range	-20 – +100 °C
Flammability	UL 94 V-2

Screw plug, PG, plastic



Thread	TD mm	TL mm	H mm	D mm	Part No.	P.U.			
PG7	12.5	6	2	15	05.506.6053.0	100			
PG9	15.2	6	2.5	19	05.506.6153.0	100			
PG11	18.6	6	2.5	22	05.506.6253.0	50			
PG13.5	20.4	6	2.5	25	05.506.6353.0	50			
PG16	22.5	6	2.5	27	05.506.6453.0	50			
PG21	28.3	8	4	33	05.506.6553.0	25			

Technical data

Material	Polyamide
Color	RAL 7035
Temperature range	-20 – +100 °C
Flammability	UL 94 V-2

Screw plug with O-ring, metric, brass

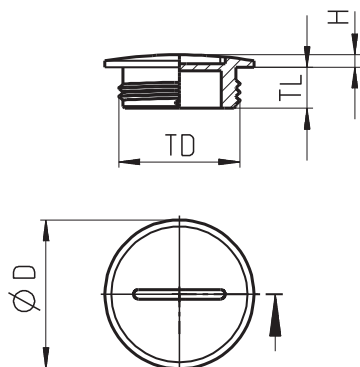


Thread	TD mm	TL mm	H mm	D mm	Part No.	P.U.			
M20x1.5	16	6-6.5	3.5-4	22-24	05.507.4021.0	10			
M25x1.5	20	7	4-6	28-30	05.507.4121.0	1			
M32x1.5	25	8	4-5.5	35-39	05.507.4221.0	1			

Technical data

Material	Brass, nickel-plated
Color	Metallic
Temperature range	IP68
Flammability	-

Dimensions



Key	
TD	Thread diameter
TL	Thread length
H	Height
D	Outer diameter

Accessories Reducer, expander, adapter

Reducer



Name	Type	Part No.	P.U.
Reducer			
Outer thread [AG]	Inner thread [IT]	D [mm]	H [mm]
M20x1.5	M16x1.5	22	9
M25x1.5	M20x1.5	27	10
M32x1.5	M25x1.5	34	11
M40x1.5	M32x1.5	43	11.6
Technical data			
Material	Brass, nickel-plated		
Color	-		
Degree of protection	-		
Flammability	-		

Expander



Name	Type	Part No.	P.U.
Expander			
Outer thread [AG]	Inner thread [IT]	D [mm]	H [mm]
M16x1.5	M20x1.5	22	17.5
M20x1.5	M25x1.5	27	20
M25x1.5	M32x1.5	34	22.5
M32x1.5	M40x1.5	42	24.5
Technical data			
Material	Brass, nickel-plated		
Color	-		
Degree of protection	-		
Flammability	-		

PG to metric adapter



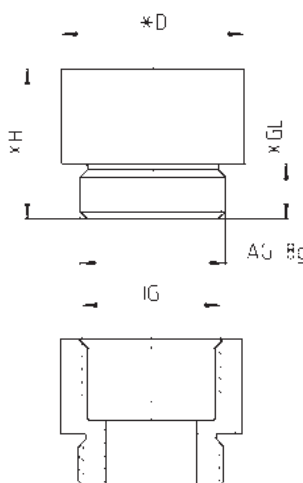
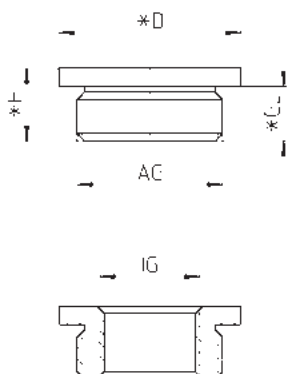
Name	Type	Part No.	P.U.
PG adapter			
Outer thread [AG]	Inner thread [IT]	D [mm]	H [mm]
PG 13.5	M20x1.5	22	19
PG 16	M20x1.5	24	9.5
PG 21	M25x1.5	30	10
Technical data			
Material	Brass, nickel-plated		
Color	-		
Degree of protection	-		
Flammability	-		

Metric to PG adapter



Name	Type	Part No.	P.U.
Metric adapter			
Outer thread [AG]	Inner thread [IT]	D [mm]	H [mm]
M20x1.5	PG 13.5	22	19
M20x1.5	PG 16	24	19
M25x1.5	PG 21	30	21
M32x1.5	PG 29	39	23
Technical data			
Material	Brass, nickel-plated		
Color	-		
Degree of protection	-		
Flammability	-		

Dimensions



Key	
AG	Outer thread
IG	Inner thread
D	Outside diameter
H	Height
GL	Thread length

Accessories Multi-hole seal

Multi-hole seal replaces standard seal



Replaces clamping range mm	Number of hole per sealing x diameter in mm	H mm	D mm	Part No.	P.U.	
6-12	2x5	8.4	16	05.512.4083.0	50	
6-12	2x6	8.4	16	05.512.4183.0	50	
6-12	3x5	8.4	16	05.512.4583.0	50	
10-14	3x6	9.3	18	05.512.4683.0	50	
13-18	3x8	12.2	22.9	05.512.4883.0	50	
13-18	4x7	12.2	22.9	05.512.5083.0 *	50	
11-17	6x4	10.7	20.4	05.512.5583.0	50	
18-25	2x8	14	30.4	05.512.4383.0	50	
15-21	9x4	14.2	25.4	05.512.5883.0	50	

Technical data

Material	Chloroprene
Color	RAL 9005
Temperature range	-20 – +100 °C

* The multi-hole seal with the part number 05.512.5083.0 is sealed with a membrane and can be used as dust or water protection even without cables.

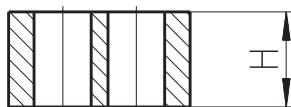
Assignment of multiple seal to cable screw gland

The multi-hole seal enables the insertion of several conductors into a screw gland and is sold separately.

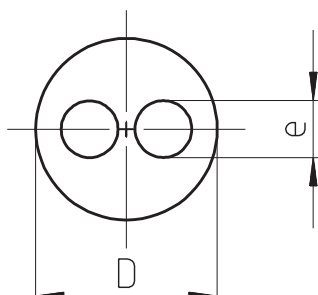
The multi-hole seal can be used in the following screw glands:

Clamping range in mm					
6-12	10-14	11-17	13-18	15-21	18-25
Multiple seal					
05.512.4083.0	05.512.4683.0	05.512.5583.0	05.512.4883.0	05.512.5883.0	05.512.4383.0
05.512.4183.0			05.512.5083.0		
05.512.4583.0					
Cable gland					
Z5.503.0453.0	Z5.503.0553.0	Z5.503.4821.0	Z5.503.0753.0	Z5.503.5021.0	Z5.503.0853.0
Z5.503.2421.0	Z5.503.2721.0		Z5.503.3121.0		Z5.503.3521.0
Z5.503.4621.0	Z5.503.2821.0		Z5.503.2921.0		Z5.503.6519.0
Z5.503.6219.0	Z5.503.6319.0		Z5.503.3221.0		Z5.504.3221.0
Z5.504.0353.0	Z5.504.0453.0		Z5.503.6419.0		Z5.504.3321.0
Z5.504.2621.0	Z5.504.2821.0		Z5.504.0553.0		Z5.504.6619.0
Z5.504.2721.0	Z5.504.2921.0		Z5.504.3021.0		
Z5.504.6319.0	Z5.504.6419.0		Z5.504.3121.0		
Z5.504.4153.1			Z5.504.6519.0		
Z5.504.4153.3					
Z5.504.5121.0					

Dimensions



Key	
e	Diameter of the bores
H	Height
D	Outer diameter





wieland

HEADQUARTERS

Wieland Electric GmbH
Brennerstraße 10 – 14
96052 Bamberg · Germany

Phone +49 951 9324-0
Fax +49 951 9324-198
info@wieland-electric.com

0544.1 MC 11/20

Represented in over 70 countries worldwide:

www.wieland-electric.com